

GUARDDOG®

WRG-100

- Primary and Secondary Protection Circuits
- Primary and Secondary Safety Fusing
- Primary and Secondary Dry Contacts
- Audible Alarm Option
- NEMA® 4X Rated Enclosure
- Listed to ANSI/UL 1449-4 & IEC 61643-11
- One Year Warranty
- Made in the USA



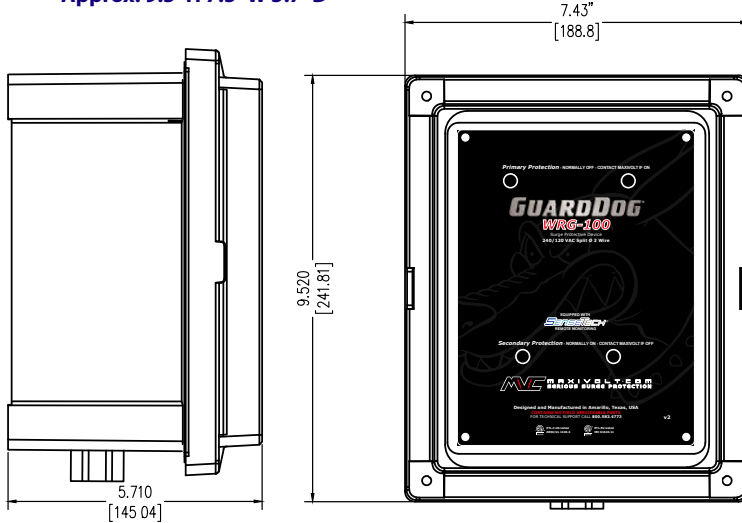
SenseTech



WRG-100 Surge Protective Device

Maxivolt GuardDog® • Made in USA • Serious Surge Protection • Made in USA • Maxivolt GuardDog® • Made in USA • Serious Surge Protection • Made in USA • Maxivolt GuardDog®

Approx. 9.5"H 7.5"W 5.7"D



Application

Voltage: 120 / 240 VAC
 Configuration: 2 Ø / 3 Wire

Characteristics

Fusing: Internal
 Indication: Blue LEDs On / Red LEDs Off
 Conductor: 12 AWG Stranded
 Enclosure: NEMA® Type 4X

Certifications

Listing: ANSI/UL 1449-4 / IEC 61643-11
 Environmental: RoHS

Specifications

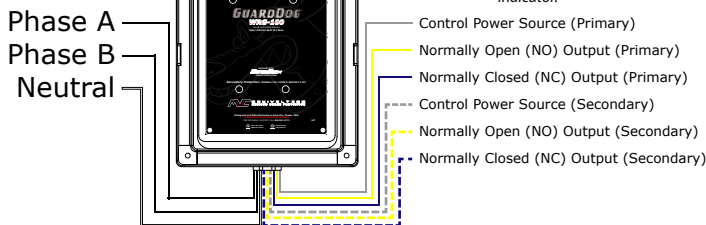
Modes of Protection: L-N, L-L
 Type (Class): II (2)
 Clamp Voltage [1 mA] L-N (L-L): 220 (440)
 VPL [2kA] L-N (L-L): 500 (960)
 VPR [3kA] L-N (L-L): 700 (1000)
 SCCR: 100 kA
 MCOV L-N (L-L): 140 (280)
 Operating Temperature: -40° C to 85° C
 Operating Humidity: 1% to 95%
 Filtering: UL 1283
 EMI-RFI Noise Attenuation: < 40 db
 Capacitance: 1 to 1.5 µF / Line
 Component Response Time: < 1 ns
 Frequency Range: 50 - 400 HZ
 Dry Contact Interface: 24 VDC - 240 VAC
 Relay Max Current: 2 Amps

Standard Installation Diagram

Install According To Instructions Provided With Device

Note: For optimum performance, minimize conductor length and avoid sharp bends.

Note: Connect Normally Open or Normally Closed conductor to input of the system control interface. The alarm interface may alternatively be connected to an audible alarm or visual indicator.



Maxivolt Corporation
 800 South Rusk Street
 Amarillo, Texas, USA

(806) 371-0722
 (800) 583-4773
www.maxivolt.com